

ASX Symbol: **NMM**

283 Rokeby Road
Subiaco WA 6008
Phone: +61 8 6141 3500
Fax: +61 8 6141 3599
www.noblemetals.com.au

BOARD OF DIRECTORS AND MANAGEMENT

Mr William Hayden
Non-Executive Chairman

Mr Miguel Palomino
Managing Director

Mr Andrew Johnstone
Non-Executive Director

Mr Jay Stephenson
Company Secretary

ISSUED CAPITAL

Shares on Issue: 148,128,458
Unlisted Options: 20,575,000



Smelting Gold, Cali Facility

NOBLE METALS LIMITED (ASX:NMM)

- **GPS Metals Lab: smelter, refinery & precious metals manufacturing facility is in Cali, Colombia and is capable of smelting over 1 tonne of gold per month.**
- **Novita Exploration Base and Precious Metals Processing/Concentrating facility. Choco, Colombia.**
- **Exclusive rights to explore and develop mining operations over the 105,000Ha Novita Higher Community Council Lands.**

GPS Metals Lab:

Noble Metals Limited ("Noble") acquired 100% ownership of GPS Metals Lab precious metals, smelter, refinery and manufacturing facility ("GPS Metals Lab Cali Facility") in July 2016. Since acquisition of the newly commissioning facility, the weekly smelting totals for gold have grown steadily. The Cali Facility has the capacity to smelter over 1 tonne of gold per month and Noble is eager to have the plant running at full capacity. Location of Cali is shown on Map (Page 2).

Additionally, the Cali Facility is now refining and manufacturing precious metal speciality finished goods. Noble, through the GPS Metals Lab, is now filling orders from global customers. These elements of the business have the potential to deliver significant revenue streams to Noble as the margins for refining and producing specialty finished goods is much greater than for simple smelting operations.

GPS Metals Lab: smelter, refinery & precious metals manufacturing facility, Services and Products: Platinum, Gold and other Precious Metals:

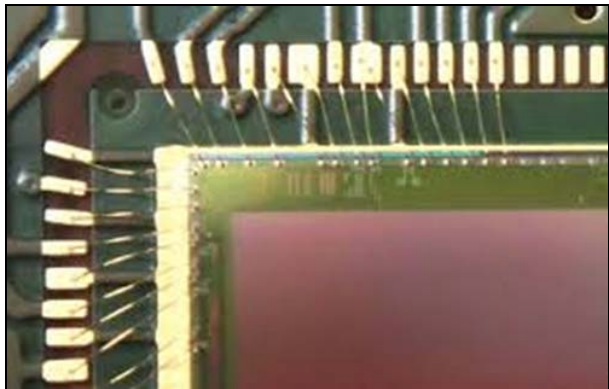
- | | |
|-------------------------------------|-------------------------------------|
| • Smelting | • Pt and Alloy crucibles |
| • Au, Pt, Rh Refining | • Sputtering Targets |
| • Au, Pt Wiredrawing | • Exploration & Analysis |
| • Au, Pt & Alloy Pellets | |



Manufactured Specialty Goods, Platinum Crucible and Gold Pellets

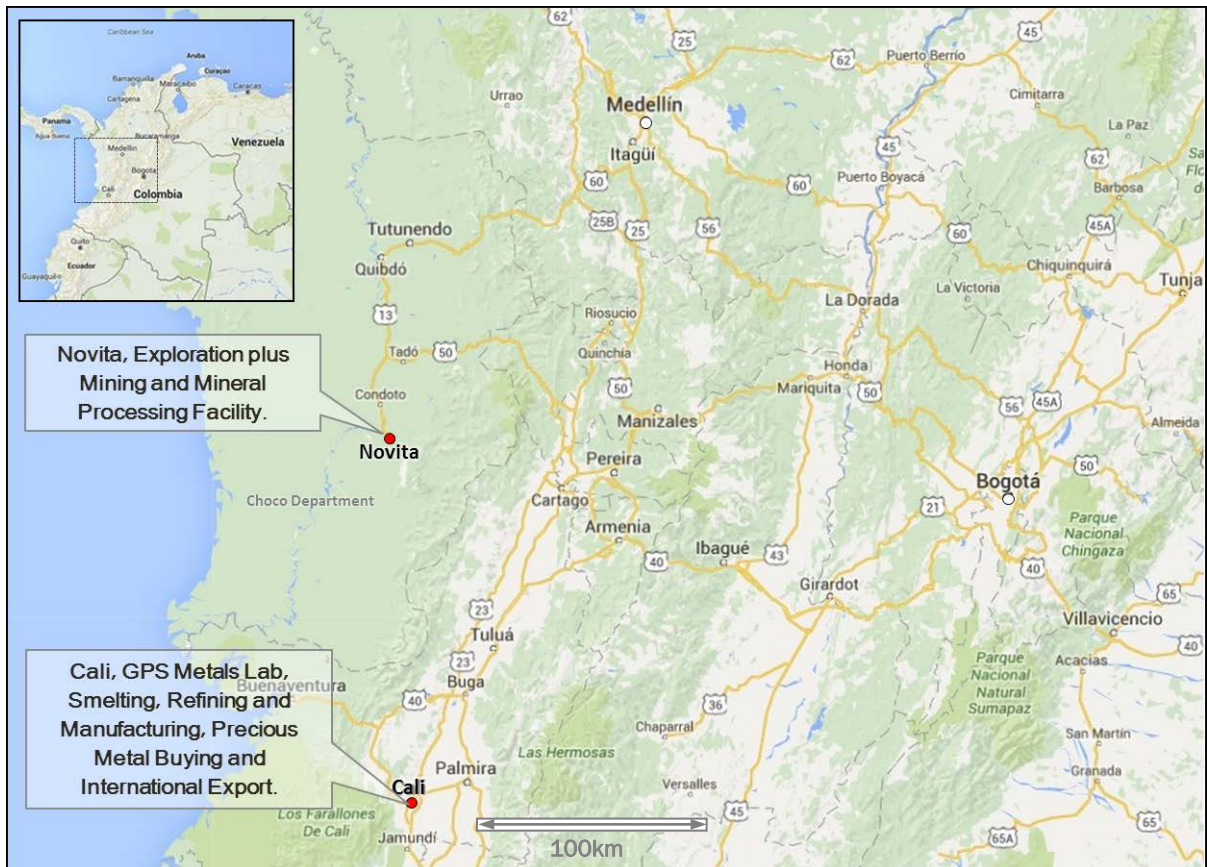
FACT SHEET February 2017

During 2016 the GPS Metals Lab Cali Facility successfully produced 23µm (micron) diameter high purity (four nines, or 99.99%) gold wire for qualification purposes to potential Asian high tech electronics manufactures. The wire was produced on a recommissioned German made Niehoff automated wire drawing machine.



Example of 23µm gold wire and application as bonded wire in electronics manufacturing

The production of 23µm wire requires refining of gold to an ultra-high purity of 99.99% and 99.999% (referred to four nines and five nines gold). This is well beyond the traditional gold for banking standard of three nines (99.95%). Ultra-high purity gold is required to meet the stringent specification of the final product.



Location of GPS Metals Lab in Cali and Novita Operation in Western Colombia, South America

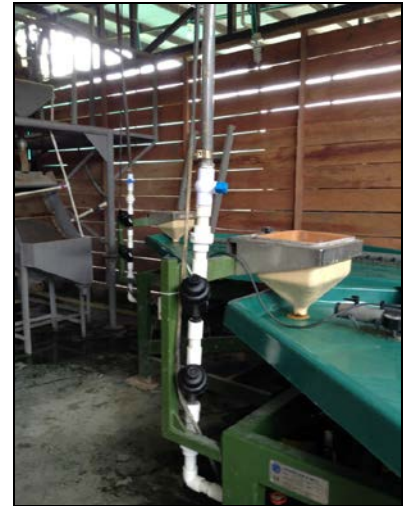
Novita Operations – Exploration Mining and Precious Metal Mineral Processing

Noble Metals has been active in the Novita region of the Choco Department of Colombia since 2012, where it has negotiated an exclusive agreement to explore and develop mineral commodities, principally gold and other precious metals, over the entire Novita Community Lands, covering over 105,000 Ha. Noble has also established a significant exploration base and minerals processing facility in the township of Novita. Preliminary investigations and trial mining has shown that the region has significant alluvial concentrations of gold and platinum with grades able to support local mines. Additionally there is potential to explore for hard rock sources of the metals found in the alluvial deposits. In 2013 Noble identified one such source known as El Tambito and with further exploration Noble expects more hard rock gold and platinum sources will be identified. Noble is both carrying out exploration and assessing third party opportunities in the Novita region in an effort to establish or support alluvial precious metals mining operations.

During 2015 Noble moved and refurbished its gold and precious metals concentrating facility at Novita, which includes magnetic separator, knelson concentrator, and 2 x gemini tables. The Plant is now securely located at the Novita Camp/Compound and is capable of processing both third party concentrates (toll treating) or whole owned Noble concentrates, once a mine/mining is established. The Novita camp/compound also gives Noble a secure base to establish precious metal buying activities.



Novita Base with helicopter pad in foreground



Precious Metals Processing, Novita

Competent Persons Statement

The information in this document that relates to Exploration Results, Mineral Resources or Ore Reserves is based on information compiled by Mr Andrew Johnstone, who is a Member of the Australian Institute of Geoscientists. Mr Andrew Johnstone has sufficient experience which is relevant to the style of mineralisation and type of deposit under consideration and to the activity which he is undertaking to qualify as a Competent Person as defined in the 2012 Edition of the 'Australasian Code for Reporting of Exploration Results, Mineral Resources and Ore Reserves'. Mr Andrew Johnstone who is a Director of the Company, consents to the inclusion in the report of the matters based on his information in the form and context in which it appears.

This release may contain forward-looking statements. Certain material factors or assumptions were applied in drawing a conclusion or making a forecast or projection as reflected in the forward-looking information. Actual values, results or events could differ materially from any conclusion, forecast or projection expressed or implied in the forward-looking